



**S15C-MUL Process Data AOI Guide, v4**  
**October 30<sup>th</sup>, 2023**

This document covers the installation and use of an Add-On Instruction (AOI) for the Logix Designer software package from Rockwell Automation. This AOI handles cyclic IO-Link Process Data In and Process Data Out to and from a Banner S15C-MUL device via an IO-Link Master to an Allen-Bradley PLC. The AOI covers parsing and display of the S15C-MUL Process Data In and Process Data Out. The AOI has one User Defined Tag data types.

**Components**

Banner\_S15C\_MUL\_PD\_v4\_AOI.L5X

**UDT Packaged with the AOI**

Banner\_S15C\_MUL\_PDIO\_v4

**Contents**

1. Installation Process .....2

2. Configuring the IO-Link Master .....4

3. Configuring the AOI.....5

4. Using the AOI.....8

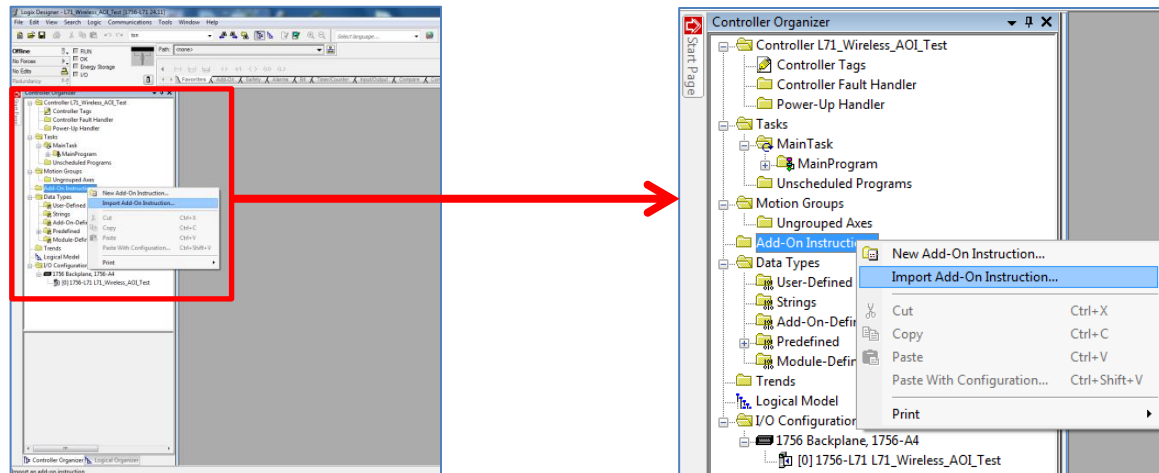
Appendix A S15C-MUL Process Data.....9

Appendix B IO-Link Master Cheat Sheet ..... 10

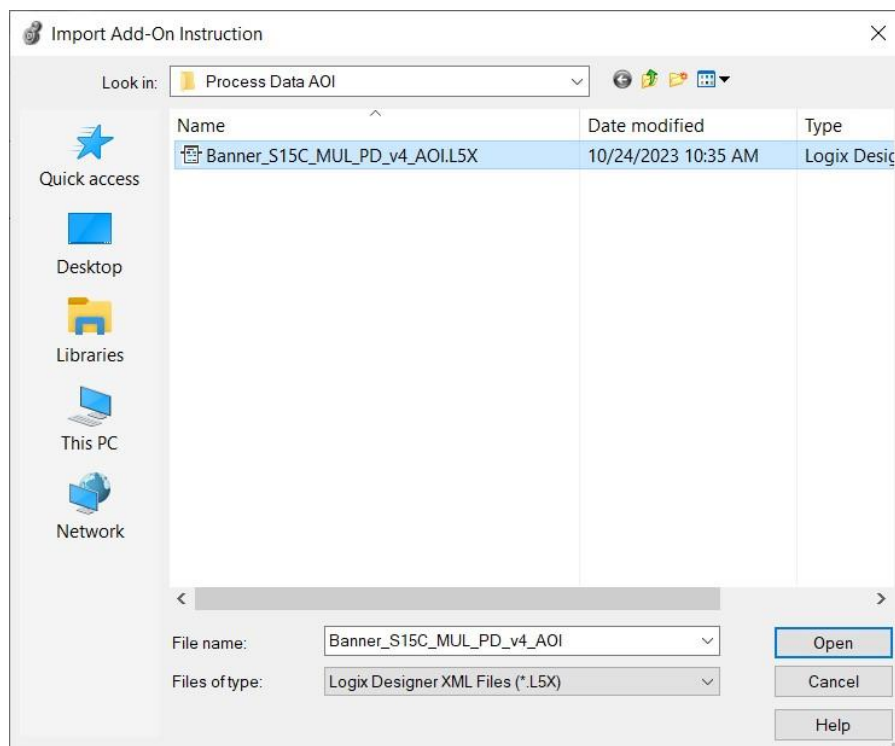
## 1. Installation Process

This section describes how to install the AOI in Logix Designer software.

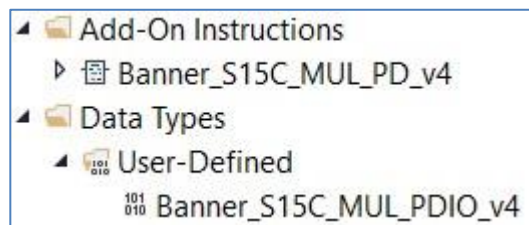
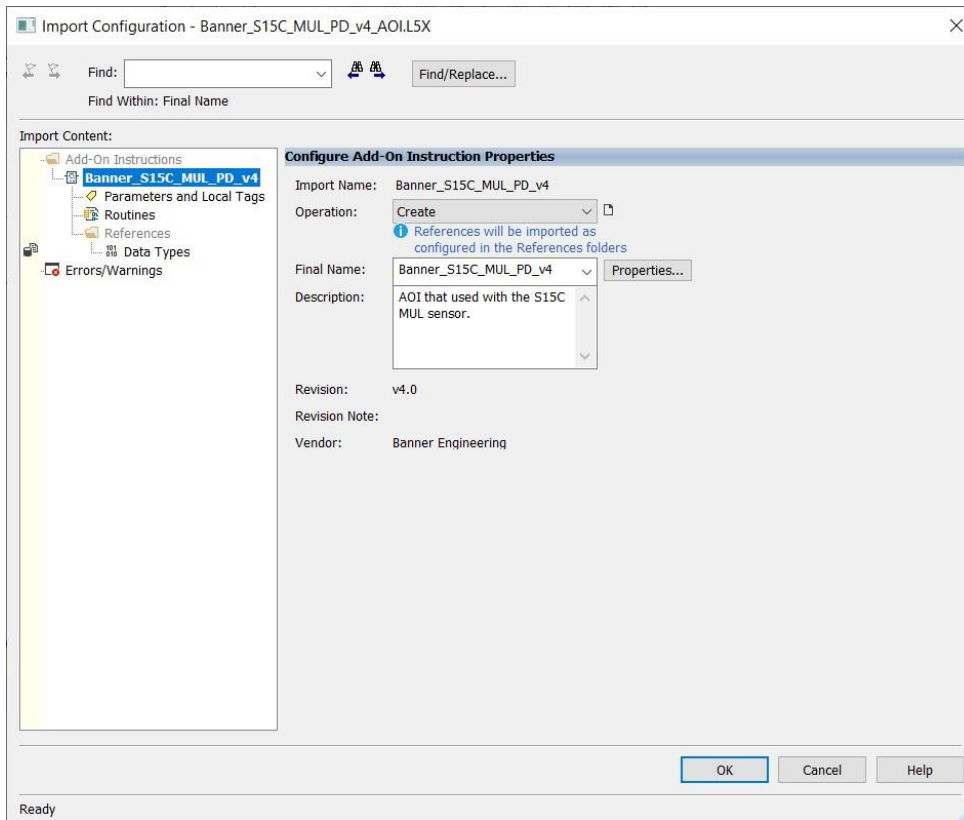
1. Open a project.
2. In the Controller Organizer window, right-click on the Add-On Instruction folder. Select the Import Add-On Instruction option.



3. Navigate to the correct file location and select the AOI to be installed. In this example the "Banner\_S15C\_MUL\_PD\_v4\_AOI.L5X" file will be selected. Click the Open button.



4. The Import Configuration window will pop up. The default selection will create all the necessary items for the AOI. Click the OK button to complete the import process.



5. The AOI is added to the Controller Organizer window and should look similar like the picture at left.
6. AOI installation into the Logix Designer software complete.

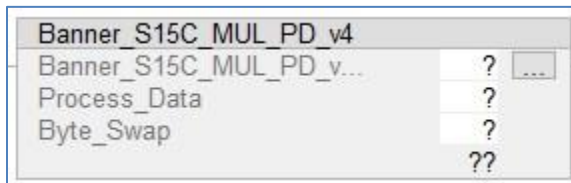
## 2. Configuring the IO-Link Master

Make an EtherNet/IP connection to the IO-Link Master.

Create an Ethernet communications module for the IO-Link Master device. The controller tags generated include Input (I) and Output (O) Assembly Instances. Each Assembly has a corresponding tag array. Creating this Class 1 EtherNet/IP implicit IO connection will provide the PLC access to the IO-Link device Process Data. Each port on the IO-Link Master is given a dedicated group of I and O registers. See the relevant IO-Link Master User's Guide for more information.

### 3. Configuring the AOI

1. Add the “Banner\_S15C\_MUL\_PD\_v4” AOI to your ladder logic program. For each of the question marks shown in the instruction we need to create and link a new tag array. The AOI includes a new type of User Defined Tags (UDT): a custom array of tags meant specifically for this AOI.



2. In the AOI, right-click on the question mark on the line labeled “Banner\_S15C\_MUL\_PD\_v4”. Click New Tag. Name the new tag. This example uses the name “S15C\_MUL\_IOLM1\_01\_PD\_Status”. The example naming convention accounts for this being a S15C-MUL device connected to IO-Link Master #1, port #1, in our program. More masters could be named IOLM2, IOLM3, and different sensors could be connected at other port numbers, etc.

Note that the Data Type is the User-Defined Data Type (UDT) entitled “Banner\_S15C\_MUL\_PD\_v4”. This custom-made array of registers is specially built to handle the memory needs of this AOI. Click Create to make the tag array.

New Tag

Name: S15C\_MUL\_IOLM1\_01\_PD\_Status

Description:

Usage: <controller>

Type: Base

Alias For:

Data Type: Banner\_S15C\_MUL\_PD\_v4

Parameter Connection:

Scope: Test

External Access: Read/Write

Style:

☐ Constant

☐ Sequencing

☐ Open Configuration

☐ Open Parameter Connections

Create

Cancel

Help

- Now we will right-click on the question mark on the line labeled “Process\_Data” in the AOI. Click on “New Tag”. Give the tag a name. This example uses the name “S15C\_MUL\_IOLM1\_01\_PD”. Notice that the Data Type is “Banner\_S15C\_MUL\_PDIO\_v4”. Click Create.

This array will handle the displaying of the parsed Process Data In and Process Data Out for the S15C-MUL.

New Tag

Name: S15C\_MUL\_IOLM1\_01\_PD

Description:

Usage: <controller>

Type: Base

Alias For:

Data Type: Banner\_S15C\_MUL\_PDIO\_v4

Parameter Connection:

Scope: Test

External Access: Read/Write

Style:

☐ Constant

☐ Sequencing

☐ Open Configuration

☐ Open Parameter Connections

Create

Cancel

Help

- The next line in the AOI is a setting to account for byte swapping. In the case of the S15C-MUL, the Process Data In is 8 bytes long. IO-Link Masters may read each pair of bytes in either order, so this AOI must be ready to perform a byte swap. Enter a “0” or a “1” to toggle this setting. See Appendix B for more information.

**NOTE:** If the IO-Link Master you are using requires byte swapping be set to “1”, the single byte of Process Data Out the S15C-MUL uses will show up in one register higher than that listed on table 1 in Appendix B.

5. The final two steps required before we download and run the S15C-MUL Process Data AOI involve a pair of File Synchronous Copy (CPS) instructions. These instructions allow the AOI to read from and write to the raw Process Data values found in the register tags of the IO-Link Master.

Add a CPS instruction before the AOI on the ladder rung that looks like the one seen below. Refer to Appendix B for which byte to start with in the “Source” area. In this case, the IO-Link Master in question has the raw Process Data In values for a device connected to port 1 starting at byte 184. For the “Destination”, we will enter the “PDI\_DT[0]” location, as seen below. Finally, the length will be 8 bytes, as that is the size of the S15C-MUL Process Data In.

CPS	
Source	IOLM1:I.Data[184]
Dest	S15C_MUL_IOLM1_01_PD.DTI[0]
Length	8

Here is what the entire rung looks like when completed.

CPS		Banner_S15C_MUL_PD_v4	
Source	IOLM1:I.Data[184]	Banner_S15C_MUL_PD_v...	S15C_MUL_IOLM1_01_PD_Status
Dest	S15C_MUL_IOLM1_01_PD.DTI[0]	Process_Data	S15C_MUL_IOLM1_01_PD
Length	8	Byte_Swap	0

The “Banner\_S15C\_MUL\_PD\_v4” AOI is now ready for use.



## 4. Using the AOI

The “Banner\_S15C\_MUL\_PD\_v4” Add-On Instruction has created a group of tags representing the S15C-MUL Process Data In and Process Data Out, broken out into its component parts.

Look in the Controller Tags to find the name you used in Step 4 above. This example used the name “S15C\_MUL\_IOLM1\_01\_PD”. The tag array, seen below, has individual pieces of information instead of a group of unlabeled bits. The parameter “Write\_Data\_Set” controls which of the three data sets that is currently being read. In the example below, the value is set to 0. This means Data Set 0 is read. The valid options are 0,1, and 2. There are three sets of Modbus Registers that could be mapped into the IO-Link Process Data In: Set\_0, Set\_1, and Set\_2. The reading of the data set is working when the “Read\_Status” has a value of 1. If it has a value of 0 then the data is not valid. The parameter “Read\_Data\_Set” should also come back with the same number as the “Write\_Data\_Set”. This is just confirming the data set.

The Process Data Out is shown near the bottom of the image and represents the choice of Modbus registers to use for the Process Data In (labeled Data\_Set).

▲ S15C_MUL_IOLM1_01_PD	{...}
S15C_MUL_IOLM1_01_PD.Distance_mm	381.0
S15C_MUL_IOLM1_01_PD.Distance_in	15.0
S15C_MUL_IOLM1_01_PD.Temperature_C	23.89
S15C_MUL_IOLM1_01_PD.Temperature_F	75.0

## Appendix A S15C-MUL Process Data

The S15C-MUL has 8 bytes of Process Data In, as shown below. There are three modes for this Process Data, called Register Sets to Read. The Process Data Out controls which of the Registers Sets defines the Process Data In (0, 1, or 2).

### ProcessDataIn "Process Data In" id=V\_Pd\_InData

bit length: 64

data type: 64-bit Record (subindex access not supported)

subindex	bit offset	data type	allowed values	default value	acc. restr.	mod. other var.	excl. from DS	name	description
1	0	16-bit UInteger	0..65535					Distance (mm)	Distance in millimeters or inches. The distance = (value) / 100.
2	16	16-bit UInteger	0..65535					Distance (in)	Distance in millimeters or inches. The distance = (value) / 100.
3	32	16-bit UInteger	0..65535					Temperature (F)	Temperature in Celcius or Farenhits. The temperature = (value) / 20.
4	48	16-bit UInteger	0..65535					Temperature (C)	Temperature in Celcius or Farenhits. The temperature = (value) / 20.

octet	0	1	2	3	4	5	6	7
bit offset	63 - 56	55 - 48	47 - 40	39 - 32	31 - 24	23 - 16	15 - 8	7 - 0
subindex	4	4	3	3	2	2	1	1
element bit	15 - 8	7 - 0	15 - 8	7 - 0	15 - 8	7 - 0	15 - 8	7 - 0

## Appendix B IO-Link Master Cheat Sheet

Different IO-Link Masters behave differently in several ways. For one, the register locations where Process Data is stored varies. For another, some IO-Link Masters require byte-swapping and/or word-swapping. The tables below aim to define some of these differences. Note that these numbers are when using all default settings. IO-Link Masters can change the register locations to which Process Data is mapped in response to non-default, optional settings. See relevant IO-Link Master documentation for more information.

PDI (Process Data In) is found in the IO-Link Master's T->O (PLC "Input") Assembly Instance.

PDO (Process Data Out) is found in the IO-Link Master's O->T (PLC "Output") Assembly Instance.

**Table 1. First Register of Process Data "SINT0"**

Port	Allen-Bradley*		Comtrol		Balluff		Turck		ifm		Banner	
	PDI	PDO	PDI	PDO	PDI	PDO	PDI	PDO	PDI	PDO	PDI	PDO
1	I.Ch0Data[0]	O.Ch0Data[0]	4	0	8	6	6	4	190	46	184	182
2	I.Ch1Data[0]	O.Ch1Data[0]	40	32	56	38	38	36	222	78	218	216
3	I.Ch2Data[0]	O.Ch2Data[0]	76	64	104	70	70	68	254	110	252	250
4	I.Ch3Data[0]	O.Ch3Data[0]	112	96	152	102	102	100	286	142	286	284
5	I.Ch4Data[0]	O.Ch4Data[0]	148	128	200	134	134	132	318	174	320	318
6	I.Ch5Data[0]	O.Ch5Data[0]	184	160	248	166	166	164	350	206	354	352
7	I.Ch6Data[0]	O.Ch6Data[0]	220	192	296	198	198	196	382	238	388	386
8	I.Ch7Data[0]	O.Ch7Data[0]	256	224	344	230	230	228	414	270	422	420

\*see relevant Banner Allen-Bradley IO-Link Master AOI Guide and Allen-Bradley User Guides for more information on using device IODD files to aid in integration.

Note: Murr IO-Link Masters have configurable process data. Refer to the Murr IO-Link Master Instruction Manual for Process Data mappings.

**Table 2. Byte-Swap**

IO-Link Master	Byte Swap
Allen-Bradley	0
Comtrol	1
Balluff	0
Turck	1
ifm	1
Murr	0
Banner	0

Specific hardware used in both tables (all default settings):

- Allen-Bradley Armor Block I/O IO-Link Master (1732E-8IOLM12R)
- Comtrol 8-EIP IO-Link Master (99608-8)
- Balluff BNI006A (BNI EIP-508-105-Z015)
- Turck TBEN-L5-8IOL
- ifm AL1122
- Murr Impact67 E DIO 12 DIO4/IOL4 4P (Art.-No. 55144)

Banner IO-Link Masters (DXMR90-4K) have a port status register. The register gives the status of the port. It gives information on if the port has an IO-Link device connected and if Process Data is valid. This is optional information but is useful for troubleshooting. The data comes into the PLC as bytes while the literature shows the value as a word. The table below gives the upper- and lower-byte data location in the PLC. The upper byte includes bits 15 through 8, while the lower byte has bits 7 through 0.

IO-Link Master Port	Upper Bits 15 - 8	Lower Bits 7 - 0
1	182	183
2	216	217
3	250	251
4	284	285
5	318	319
6	352	353
7	386	387
8	420	421

#### Port Status:

**Bit0** = Connected?  
**Bit1** = Process Data Valid?  
**Bit2** = Event Pending?  
**Bit3** = Ready for ISDU?  
**Bit4** = Pin4 SIO State  
**Bit5** = Pin2 SIO State

#### Bit6-7 = Pin4 Mode:

SDCI Mode = 0  
 SIO Input Mode = 1  
 SIO Output Mode = 2

#### Bit8-10 = Pin2 Mode:

Disabled = 0  
 Input Normal = 1  
 Output = 2  
 Diagnostic Input = 3  
 Inverted Input = 4